

STANDARD FILTER BAGS

ALLIED FILTER SYSTEMS LTD. MANUFACTURES HIGH QUALITY LIQUID FILTER BAGS TO FIT STANDARD SIZE FILTER VESSELS, AS WELL AS CUSTOM DESIGNED PRODUCTS WHERE REQUESTED.

The constituent materials have been chosen for their purity, consistent high quality and repeatable performance.

Filter bags are available in traditional stitched form or with a fully welded construction, and are fitted with a comprehensive choice of rings.

7" or 4" galvanised Steel rings (or stainless steel) which fit universally into all filter housings. Polypropylene rings and stainless steel bands are also available.

Custom designed moulded **Welseal** (polypropylene or polyester) welded rings, giving more positive sealing, needle hole elimination and lifting handles for faster and easier bag installation and replacement. A **Welseal** ring product is fully combustible.

Custom designed positive sealing **Santaseal** moulded ring, for applications where high temperature or chemical resistant properties are required.



NEEDLEFELTS :

Polypropylene • Polyester • Polypropylene extended life • Polyester extended life • Nylon • Nomex® • PTFE
Micron rating range 0.5 – 200

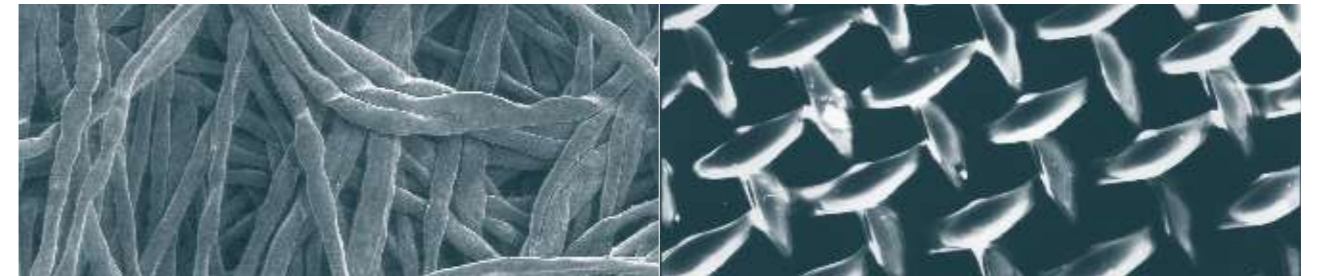
MONOFILAMENT MESHES :

Nylon • Polyester • Polypropylene • Fluoropolymer •
Micron rating range 1 - 1500

SPECIALITY MEDIA :

Polyester multifilament meshes • Spun bonds • Meltblowns • Woven cloths • Antistatic fabrics • Elastomeric fabrics • PVC

FILTER BAG AND MEDIA TECHNICAL DATA



Surface of polyester needlefelt

Nylon monofilament mesh

Taken at the surface science laboratory, University of Oxford

CHEMICAL COMPATIBILITY TABLE

MEDIA / COLLAR TYPE	ACIDS	ALKALI	SOLVENTS	OXIDANTS	RECOMMENDED MAXIMUM OPERATING TEMPERATURE (°C)
Polyester	G	G	E	P	140°C
Polypropylene	E	E	G	E	93°C
Nylon	F	G	E	F	110°C
Nomex®	G	G	E	E	200°C
PTFE	E	E	E	E	260°C
Santoprene®	E	E	E	E	200°C

Table Key: P = Poor F = Fair G = Good E = Excellent

BAG SIZE	DIAMETER (inches/mm)	LENGTH (inches/mm)	SURFACE AREA (m ²)	VOLUME (l)	MAXIMUM FLOW RATE (m ³ /hr)*
1	7"/180mm	17"/430mm	0.25	11.0	20
2	7"/180mm	32"/810mm	0.50	20.0	40
3 (1M)	4"/104mm	9"/230mm	0.07	1.9	6
4 (2M)	4"/104mm	14"/360mm	0.12	3.2	10

* Flow rate depends on factors such as filter media type, micron rating, and fluid being filtered. All dimensions are nominal

US STANDARD MESH

18	20	25	30	35	40	45	50	60	70	80	100	120	140	170	200	230	270	325	400	550	800	1250
1000	840	710	590	500	420	350	297	250	210	177	149	125	105	88	74	62	53	44	37	25	15	10

MICRONS

ALL FILTER BAGS ARE MANUFACTURED TO ISO 9001 QUALITY STANDARDS AND UNDER FOOD SAFE AND SILICONE FREE CONDITIONS TO MINIMISE ANY POSSIBLE CONTAMINATIONS.